

CYBER CHECK



**EASY-TO-USE
LOW COST
CYBER RISK
SOLUTION**

Cyber Risk Management For Every Business

Simple to understand, quick to monitor, easy to prevent.

Identify threats and help protect your business from cyber attack, service interruption, or data breach.

Protecting your business from cyber risk has never been more important. As new reports of 'data' and 'security' breaches appear weekly, our innovative cyber risk management service - CRIF CyberCheck pioneering cyber risk technology helps make protecting your business easy!

Simple to understand, quick to monitor, easy to prevent.

SIMPLE

Make Cyber risk simple to understand. No specialist knowledge required.

LOW COST

Choose a low Cost, point-in-time report or full on-going Cyber risk monitoring.

ACTIONABLE

Threats are prioritised to highlight high-risks that require immediate action.

INSTANT

Uses the latest Cyber data / trends to instantly report vulnerabilities.

INSIGHTS

Identifies threats based to your company's current cyber risk.

*Recent reports show 43% of businesses have experienced cyber security breaches or attacks in the last 12 months.



STAYING AHEAD OF CYBER RISK

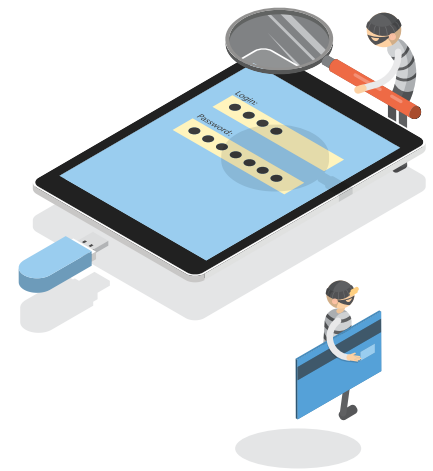
How we do business is changing and with this change comes new threats, not just to business but also to customer data. In the new digital world the risks to your business extend beyond assessing KYC or credit. Our innovative new cyber risk reports let you identify and monitor the cyber risk of any company in seconds.

To get started simply enter a single url or domain name. That's all you need to do.

Simply enter any domain name...

CyberCheck will then analyse your public facing systems to identify potential vulnerabilities in...

- unpatched or obsolete service software
- domain admin and risks analysis
- use of out-of-date sites and certificates
- phishing & malware risk
- data breach monitors
- and much more.



CRIF CyberCheck provides you with an instant independent cyber risk profile to support your IT, security and GDPR team. Using just your domain name it investigates and analyses cyber risks facing the business in real-time. In seconds it will deliver an intuitive report, written in simple business language, using the universal traffic light system, 'red, amber, green', to indicate risk severity.



- High priority risks are flagged for immediate action
- Provides an independent audit to support GDPR and IT security
- No technical expertise is required
- Identify vulnerabilities allowing you take corrective action

LOW COST OPTIONS TO SUIT ANY BUDGET

Simply choose the option that best suits your business.



CYBERCHECK

CRIF's CyberCheck report gives you a point-in-time report on the cyber risks of your business; showing high-risk current cyber vulnerabilities.

RISKS & THREATS ANALYSED

CRIF CyberCheck uses the latest cyber risk technology to instantly identify vulnerabilities in...



Better Understanding Your Cyber Risks

Cyber risk is much more than just hacking. It can come from inside as well as outside of the business. From using unpatched or obsolete software, human errors, service provider and supplier failure, domain admins, or network interruptions. One thing that is certain is if a data breach occurs it can cause serious long term reputational damage to your business brand.

Our cyber risk reports help protect against the following threats...

Domain Risk Analysis

Finds all domains connected to you and their associated cyber risks.

Service Risk Analysis

Finds all services/software running on your domains and their associated cyber risks.

Comparative Risk

Shows how your cyber risk exposure compares to those of similar companies.

Phishing Risk

Checks that your websites are not hosting dangerous content.

Malware Risk

Identify whether domains owned by the Organisation are being used or impersonated to host phishing or malware.

Customer Support

Expert support and analysis of cyber risks and advice on how to fix those identified.

Sites & Certificates Risk

Checks your websites are maintained and security certificates are up to date.

Service Location

Identify the location(s) of the Organisation's services through IP data